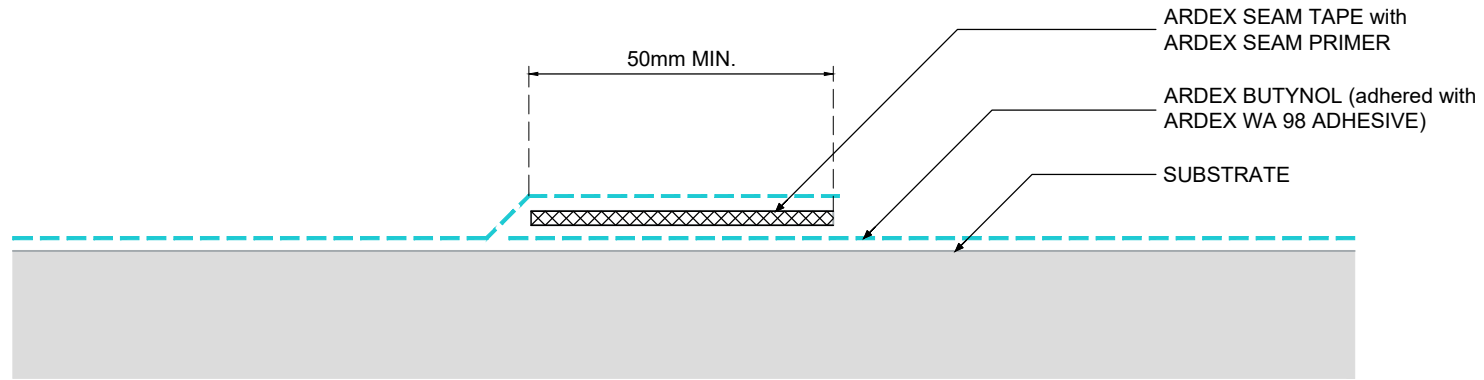


TYPICAL MEMBRANE LAP

NOTES



ARDEX SEAM TAPE with
ARDEX SEAM PRIMER

ARDEX BUTYNOL (adhered with
ARDEX WA 98 ADHESIVE)

SUBSTRATE

50mm MIN.



ARDEX AUSTRALIA
www.ardexaustralia.com

The technical details, recommendations & other information contained in this drawing is given in good faith & represents the best of our knowledge and experience at the time of design. It is your responsibility to ensure that our products are used used correctly in accordance with any applicable Australian Standard, our instructions & recommendations are only for the uses they are intended. We also reserve the right to update information without prior notice to reflect our ongoing research and development program. Country specific recommendations, depending on local standards, codes of practice, building regulations and industry guidelines may effect specific installation recommendations. The supply of our products and services are also subject to certain terms, warranties & exclusions which are available to you on request

FILE NAME TYPICAL MEMBRANE LAP

DRAWN 15/03/2024 by AD

CHECKED ADAM MCGLONE

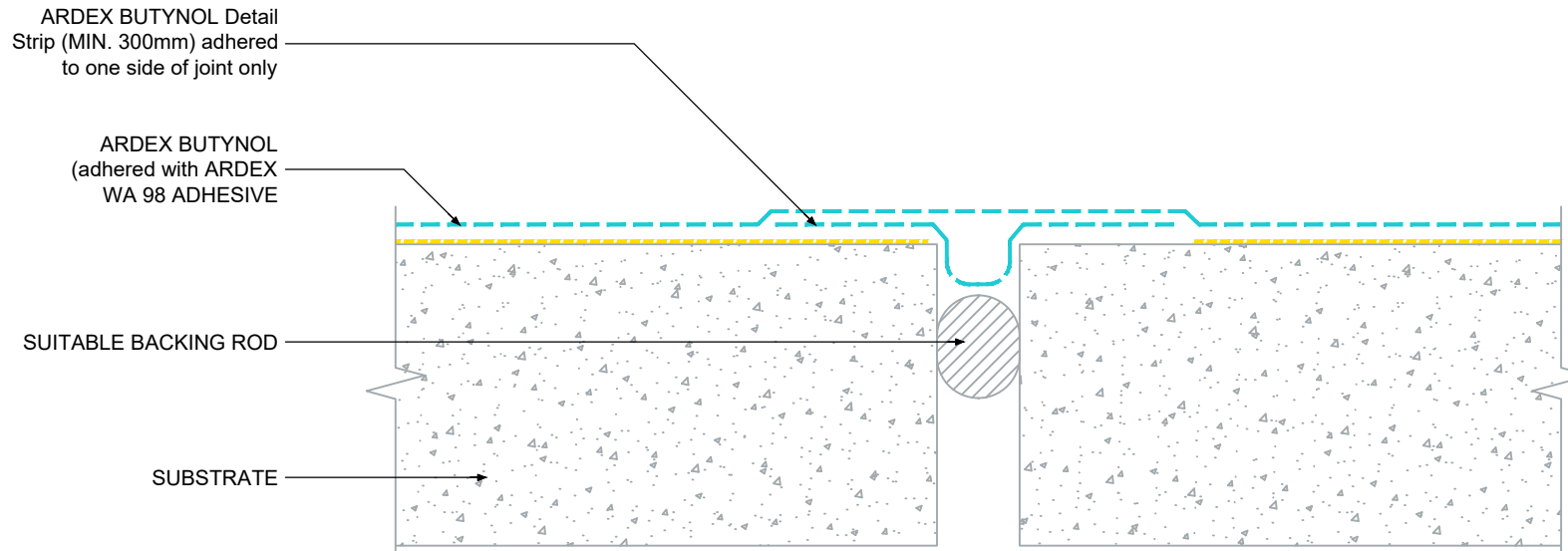
SIZE A4

SCALE NTS

DRAWING D82

TYPICAL MOVEMENT JOINT
DETAIL - OPTION 1

NOTES



The technical details, recommendations & other information contained in this drawing is given in good faith & represents the best of our knowledge and experience at the time of design. It is your responsibility to ensure that our products are used used correctly in accordance with any applicable Australian Standard, our instructions & recommendations are only for the uses they are intended. We also reserve the right to update information without prior notice to reflect our ongoing research and development program. Country specific recommendations, depending on local standards, codes of practice, building regulations and industry guidelines may effect specific installation recommendations. The supply of our products and services are also subject to certain terms, warranties & exclusions which are available to you on request

FILE NAME	TYPICAL MOVEMENT JOINT DETAIL - OPTION 1
DRAWN	15/03/2024 by AD
CHECKED	ADAM MCGLONE
SIZE	A4

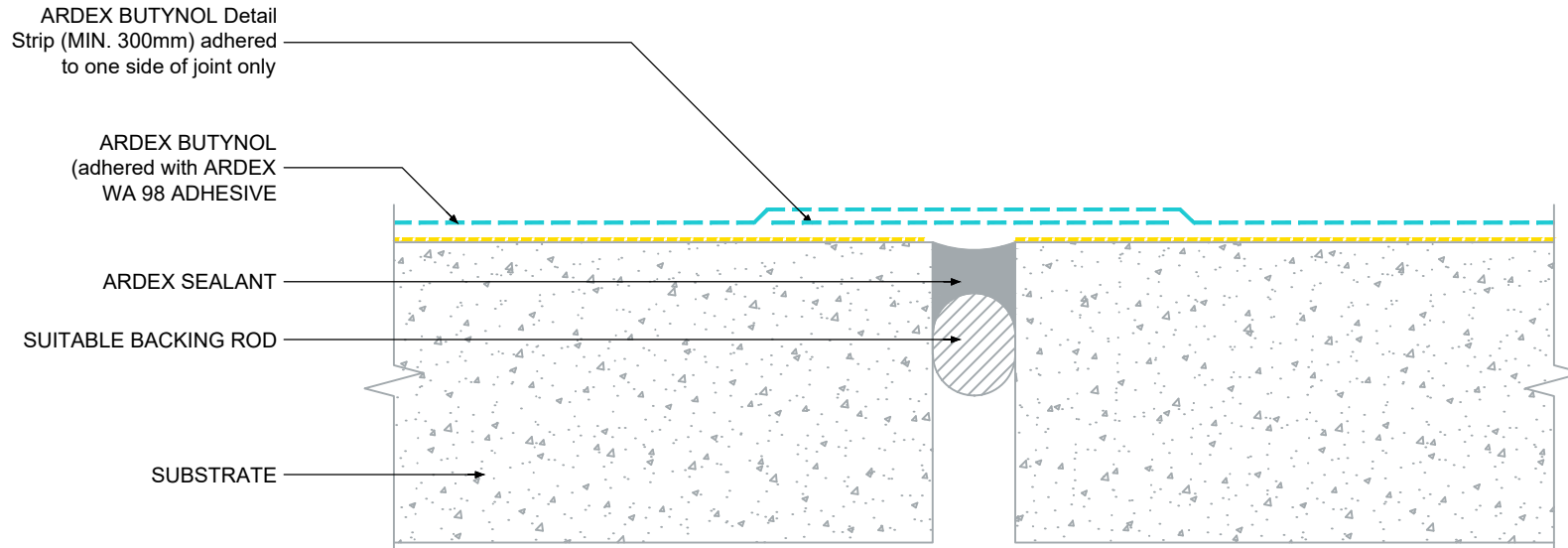
ARDEX AUSTRALIA
www.ardexaustralia.com

SCALE NTS

DRAWING D83-1

TYPICAL MOVEMENT JOINT
DETAIL - OPTION 2

NOTES



The technical details, recommendations & other information contained in this drawing is given in good faith & represents the best of our knowledge and experience at the time of design. It is your responsibility to ensure that our products are used used correctly in accordance with any applicable Australian Standard, our instructions & recommendations are only for the uses they are intended. We also reserve the right to update information without prior notice to reflect our ongoing research and development program. Country specific recommendations, depending on local standards, codes of practice, building regulations and industry guidelines may effect specific installation recommendations. The supply of our products and services are also subject to certain terms, warranties & exclusions which are available to you on request

FILE NAME	TYPICAL MOVEMENT JOINT DETAIL - OPTION 2
DRAWN	15/03/2024 by AD
CHECKED	ADAM MCGLONE
SIZE	A4

ARDEX AUSTRALIA	
www.ardexaustralia.com	
SCALE	NTS
DRAWING	D83-2

TYPICAL OVERFLOW WITH RAINHEAD

NOTES

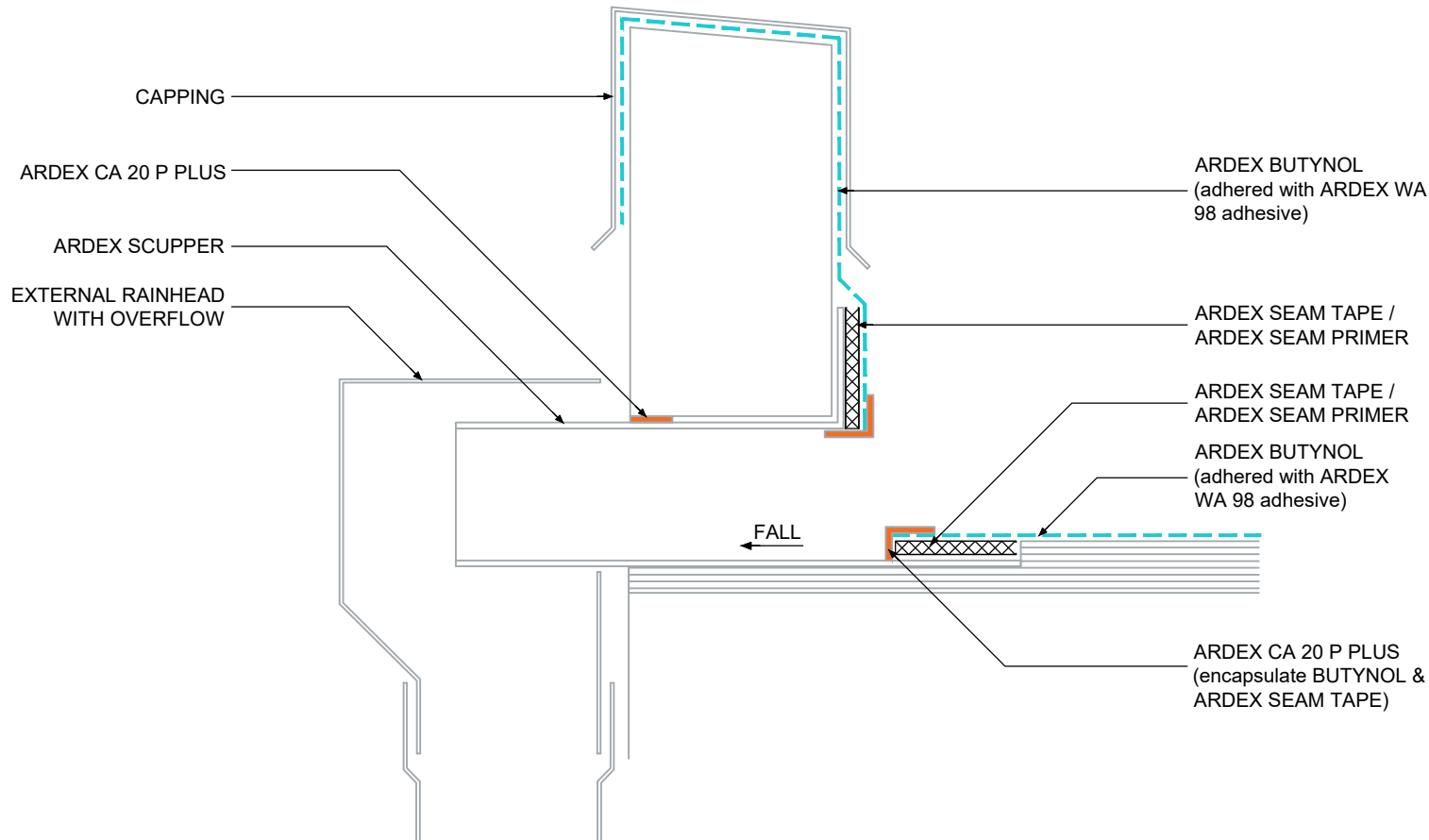
ARDEX BUTYNOL must be solvent wiped (allow to flash off) then apply ARDEX WPM 299 SEAM PRIMER (allow to dry) prior to ARDEX CA 20 P PLUS application directly onto ARDEX BUTYNOL.



ARDEX AUSTRALIA
www.ardexaustralia.com

SCALE NTS

DRAWING D84



CAPPING

ARDEX CA 20 P PLUS

ARDEX SCUPPER

EXTERNAL RAINHEAD WITH OVERFLOW

FALL

ARDEX BUTYNOL (adhered with ARDEX WA 98 adhesive)

ARDEX SEAM TAPE / ARDEX SEAM PRIMER

ARDEX SEAM TAPE / ARDEX SEAM PRIMER

ARDEX BUTYNOL (adhered with ARDEX WA 98 adhesive)

ARDEX CA 20 P PLUS (encapsulate BUTYNOL & ARDEX SEAM TAPE)

The technical details, recommendations & other information contained in this drawing is given in good faith & represents the best of our knowledge and experience at the time of design. It is your responsibility to ensure that our products are used used correctly in accordance with any applicable Australian Standard, our instructions & recommendations are only for the uses they are intended. We also reserve the right to update information without prior notice to reflect our ongoing research and development program. Country specific recommendations, depending on local standards, codes of practice, building regulations and industry guidelines may effect specific installation recommendations. The supply of our products and services are also subject to certain terms, warranties & exclusions which are available to you on request

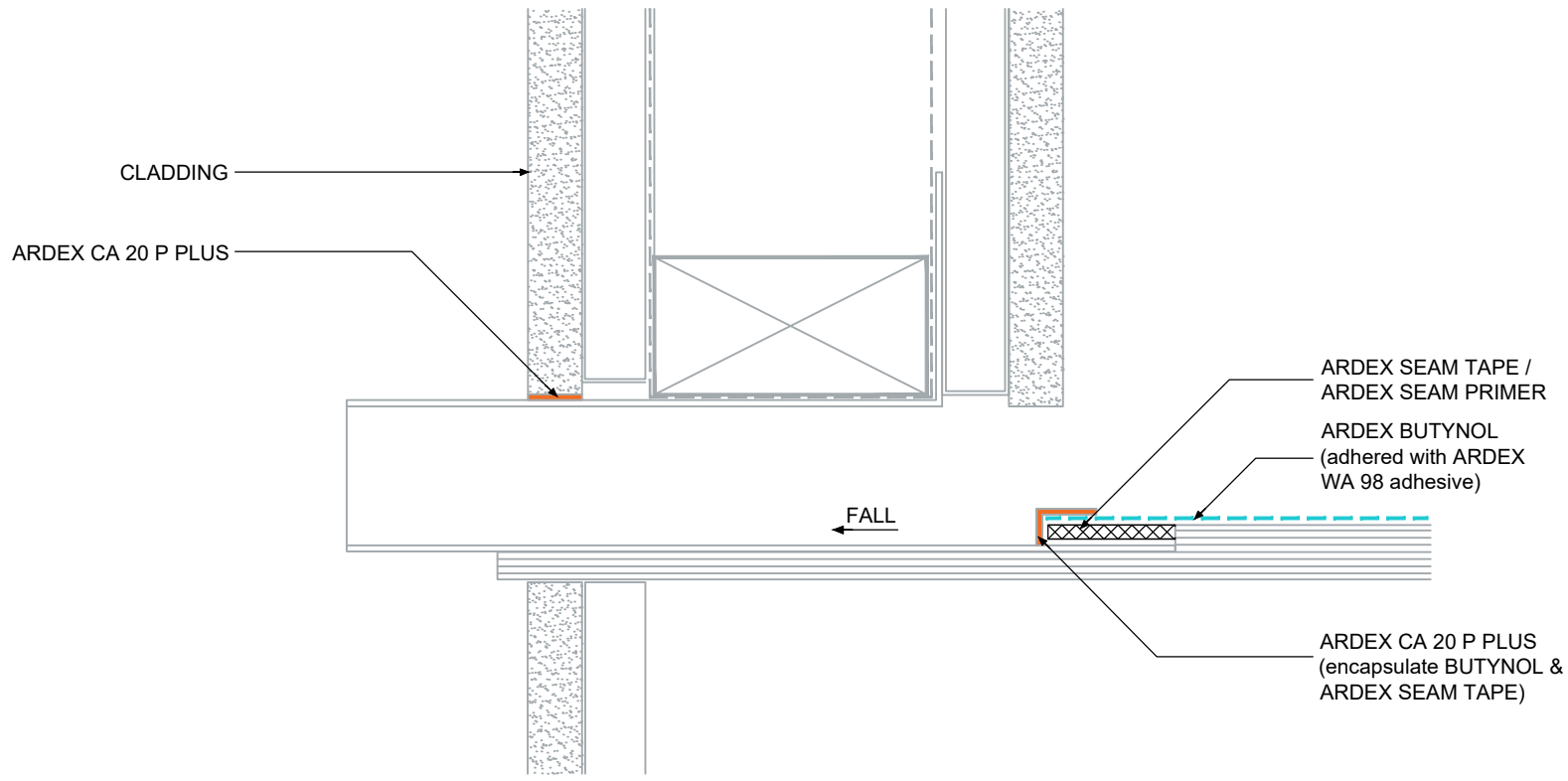
FILE NAME TYPICAL OVERFLOW WITH RAINHEAD

DRAWN 15/03/2024 by AD

CHECKED ADAM MCGLONE

SIZE A4

TYPICAL OVERFLOW



NOTES

ARDEX BUTYNOL must be solvent wiped (allow to flash off) then apply ARDEX WPM 299 SEAM PRIMER (allow to dry) prior to ARDEX CA 20 P PLUS application directly onto ARDEX BUTYNOL.



The technical details, recommendations & other information contained in this drawing is given in good faith & represents the best of our knowledge and experience at the time of design. It is your responsibility to ensure that our products are used used correctly in accordance with any applicable Australian Standard, our instructions & recommendations are only for the uses they are intended. We also reserve the right to update information without prior notice to reflect our ongoing research and development program. Country specific recommendations, depending on local standards, codes of practice, building regulations and industry guidelines may effect specific installation recommendations. The supply of our products and services are also subject to certain terms, warranties & exclusions which are available to you on request

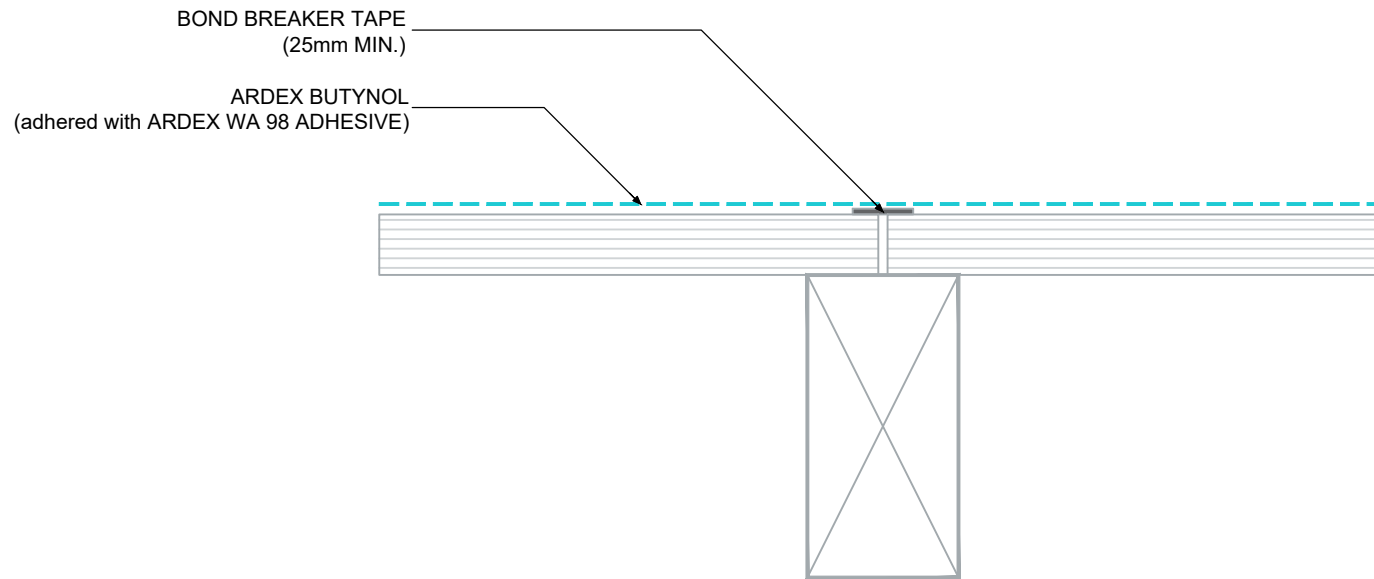
FILE NAME	TYPICAL OVERFLOW
DRAWN	15/03/2024 by AD
CHECKED	ADAM MCGLONE
SIZE	A4

ARDEX AUSTRALIA	
www.ardexaustralia.com	
SCALE	NTS
DRAWING	D85

TYPICAL PLYWOOD
SUBSTRATE JOINS DETAIL

NOTES

All plywood substrate joins must be taped to prevent stressing of ARDEX BUTYNOL due to substrate movement.



The technical details, recommendations & other information contained in this drawing is given in good faith & represents the best of our knowledge and experience at the time of design. It is your responsibility to ensure that our products are used used correctly in accordance with any applicable Australian Standard, our instructions & recommendations are only for the uses they are intended. We also reserve the right to update information without prior notice to reflect our ongoing research and development program. Country specific recommendations, depending on local standards, codes of practice, building regulations and industry guidelines may effect specific installation recommendations. The supply of our products and services are also subject to certain terms, warranties & exclusions which are available to you on request

FILE NAME TYPICAL PLYWOOD SUBSTRATE JOINS
DETAIL

DRAWN 15/03/2024 by AD

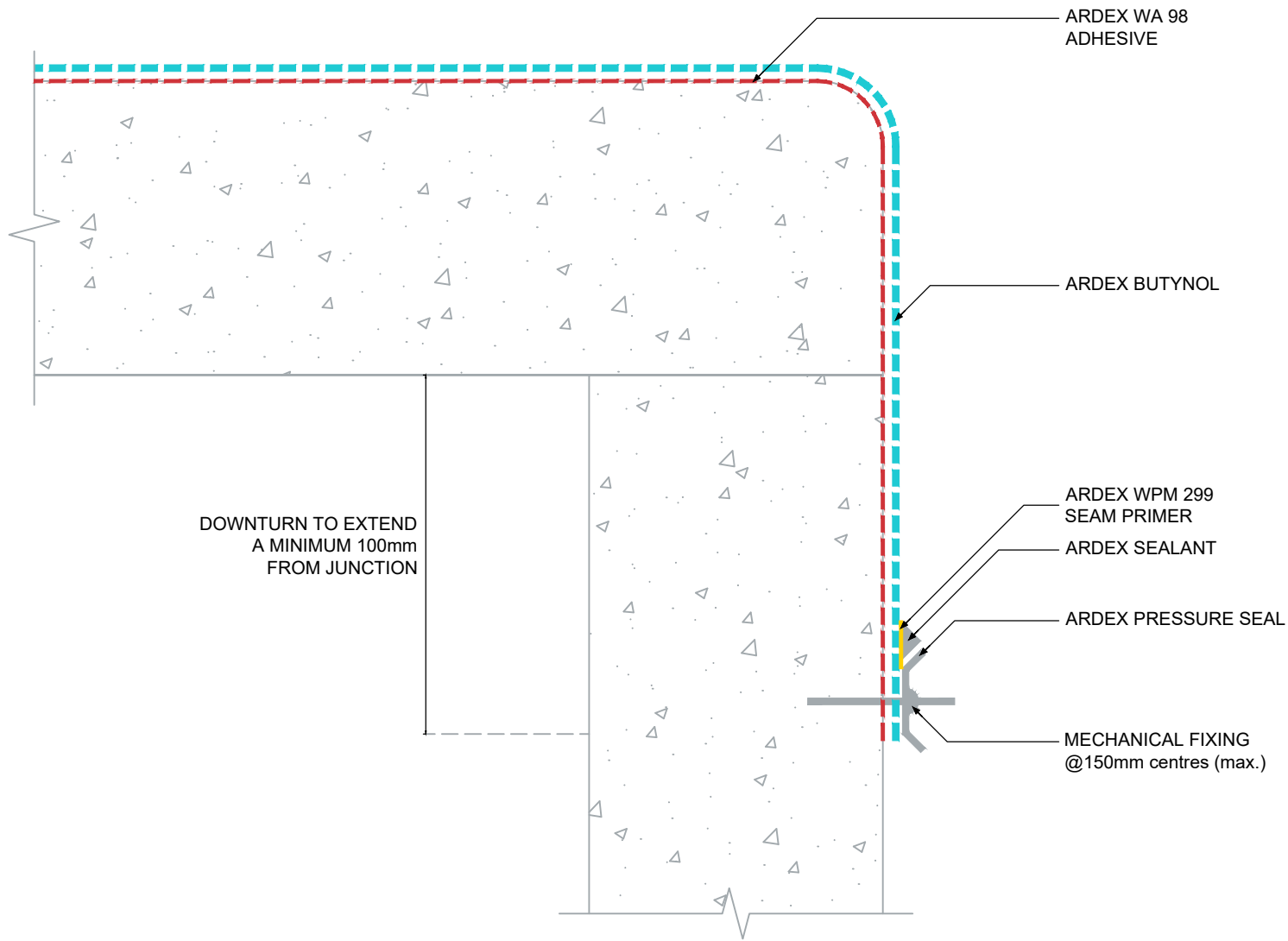
CHECKED ADAM MCGLONE

SIZE A4

ARDEX AUSTRALIA
www.ardexaustralia.com

SCALE NTS

DRAWING D87



VERTICAL DOWNTURN TERMINATION WITH ARDEX PRESSURE SEAL - ARDEX BUTYNOL

NOTES

ARDEX BUTYNOL must be solvent wiped (allow to flash off) then apply ARDEX WPM 299 SEAM PRIMER (allow to dry) prior to ARDEX SEALANT application directly onto ARDEX BUTYNOL.



The technical details, recommendations & other information contained in this drawing is given in good faith & represents the best of our knowledge and experience at the time of design. It is your responsibility to ensure that our products are used correctly in accordance with any applicable Australian Standard, our instructions & recommendations are only for the uses they are intended. We also reserve the right to update information without prior notice to reflect our ongoing research and development program. Country specific recommendations, depending on local standards, codes of practice, building regulations and industry guidelines may effect specific installation recommendations. The supply of our products and services are also subject to certain terms, warranties & exclusions which are available to you on request

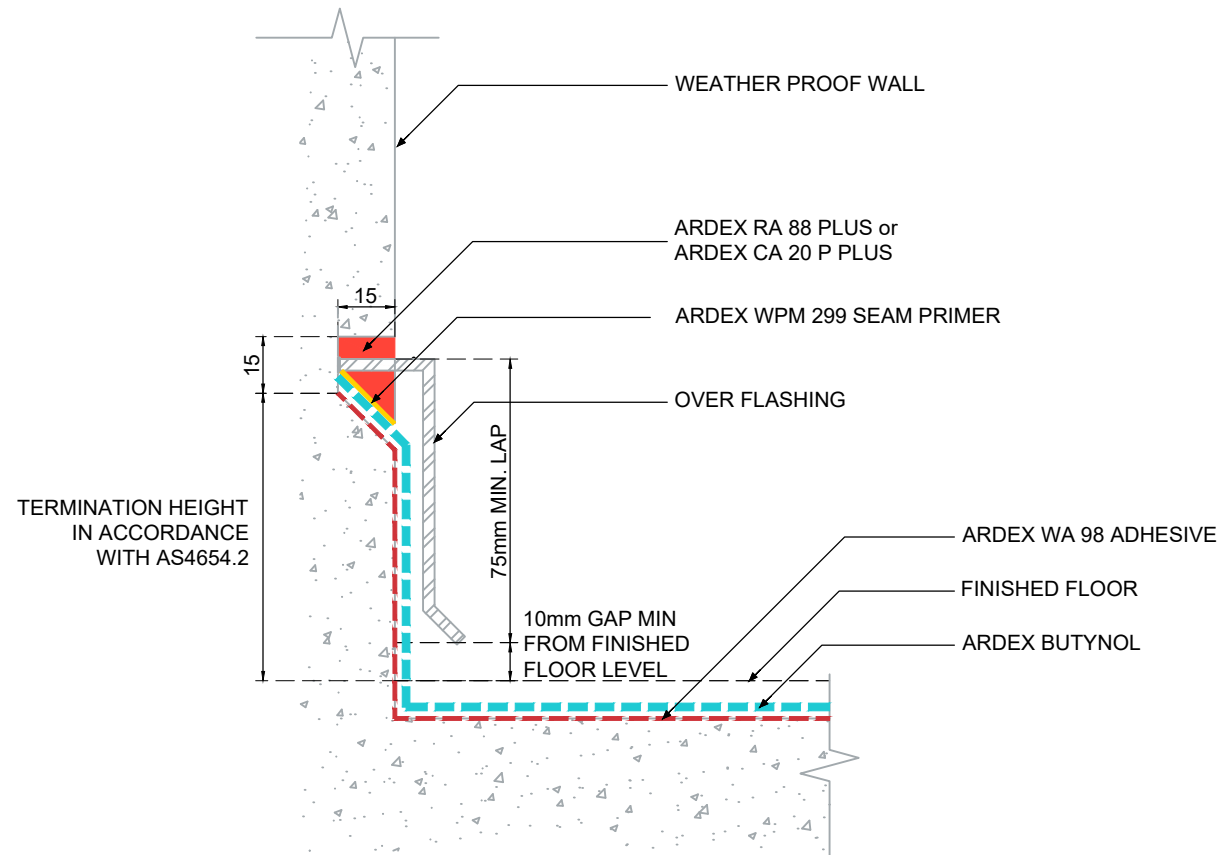
FILE NAME	VERTICAL DOWNTURN TERMINATION WITH ARDEX PRESSURE SEAL - ARDEX BUTYNOL
DRAWN	15/03/2024 by AD
CHECKED	ADAM MCGLONE
SIZE	A4

ARDEX AUSTRALIA	
www.ardexaustralia.com	
SCALE	NTS
DRAWING	D88

**VERTICAL OVER - FLASHING
TERMINATION WITH
MEMBRANE INTO REGLET -
ARDEX BUTYNOL**

NOTES

ARDEX BUTYNOL must be solvent wiped (allow to flash off) then apply ARDEX WPM 299 SEAM PRIMER (allow to dry) prior to ARDEX RA 88 PLUS or ARDEX CA 20 P PLUS application directly onto ARDEX BUTYNOL.



ARDEX AUSTRALIA
www.ardexaustralia.com

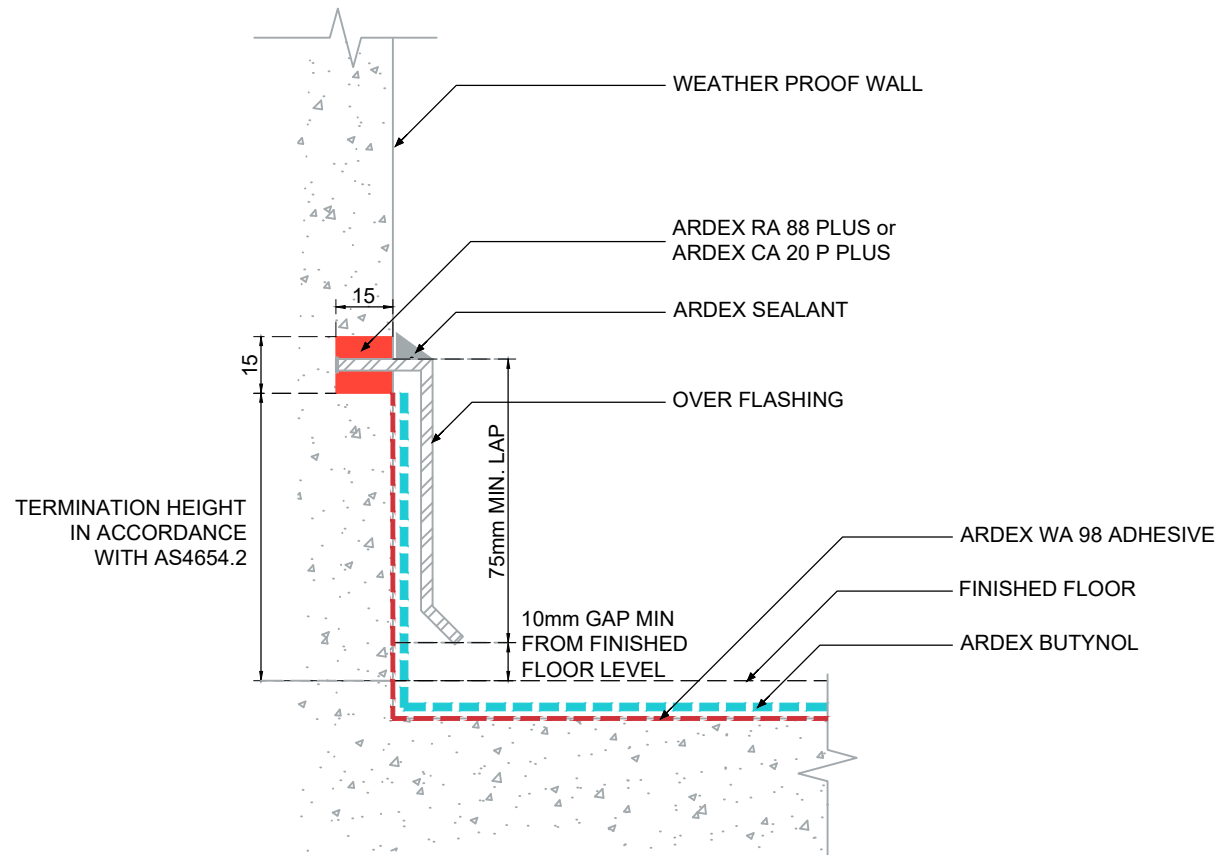
The technical details, recommendations & other information contained in this drawing is given in good faith & represents the best of our knowledge and experience at the time of design. It is your responsibility to ensure that our products are used used correctly in accordance with any applicable Australian Standard, our instructions & recommendations are only for the uses they are intended. We also reserve the right to update information without prior notice to reflect our ongoing research and development program. Country specific recommendations, depending on local standards, codes of practice, building regulations and industry guidelines may effect specific installation recommendations. The supply of our products and services are also subject to certain terms, warranties & exclusions which are available to you on request

FILE NAME	VERTICAL OVER - FLASHING TERMINATION WITH MEMBRANE INTO REGLET - ARDEX BUTYNOL
DRAWN	15/03/2024 by AD
CHECKED	ADAM MCGLONE
SIZE	A4

SCALE NTS
DRAWING D89

VERTICAL OVER - FLASHING
TERMINATION - ARDEX
BUTYNOL

NOTES



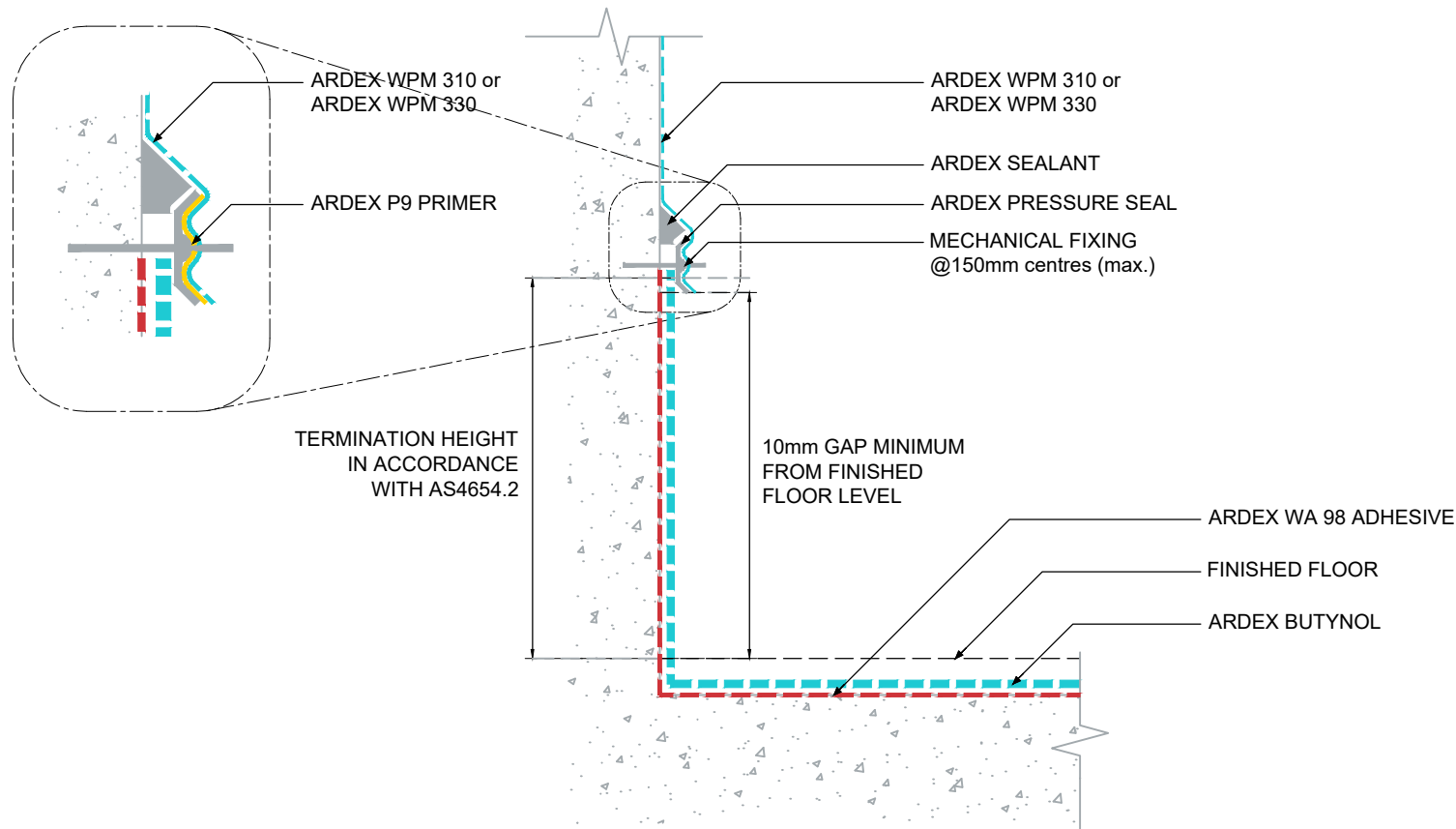
The technical details, recommendations & other information contained in this drawing is given in good faith & represents the best of our knowledge and experience at the time of design. It is your responsibility to ensure that our products are used correctly in accordance with any applicable Australian Standard, our instructions & recommendations are only for the uses they are intended. We also reserve the right to update information without prior notice to reflect our ongoing research and development program. Country specific recommendations, depending on local standards, codes of practice, building regulations and industry guidelines may effect specific installation recommendations. The supply of our products and services are also subject to certain terms, warranties & exclusions which are available to you on request

FILE NAME	VERTICAL OVER - FLASHING TERMINATION - ARDEX BUTYNOL
DRAWN	15/03/2024 by AD
CHECKED	ADAM MCGLONE
SIZE	A4

ARDEX AUSTRALIA	
www.ardexaustralia.com	
SCALE	NTS
DRAWING	D90

**VERTICAL TERMINATION
WITH ARDEX PRESSURE
SEAL & ARDEX PROTECTIVE
COATING - ARDEX
BUTYNOL**

NOTES



ARDEX AUSTRALIA
www.ardexaustralia.com

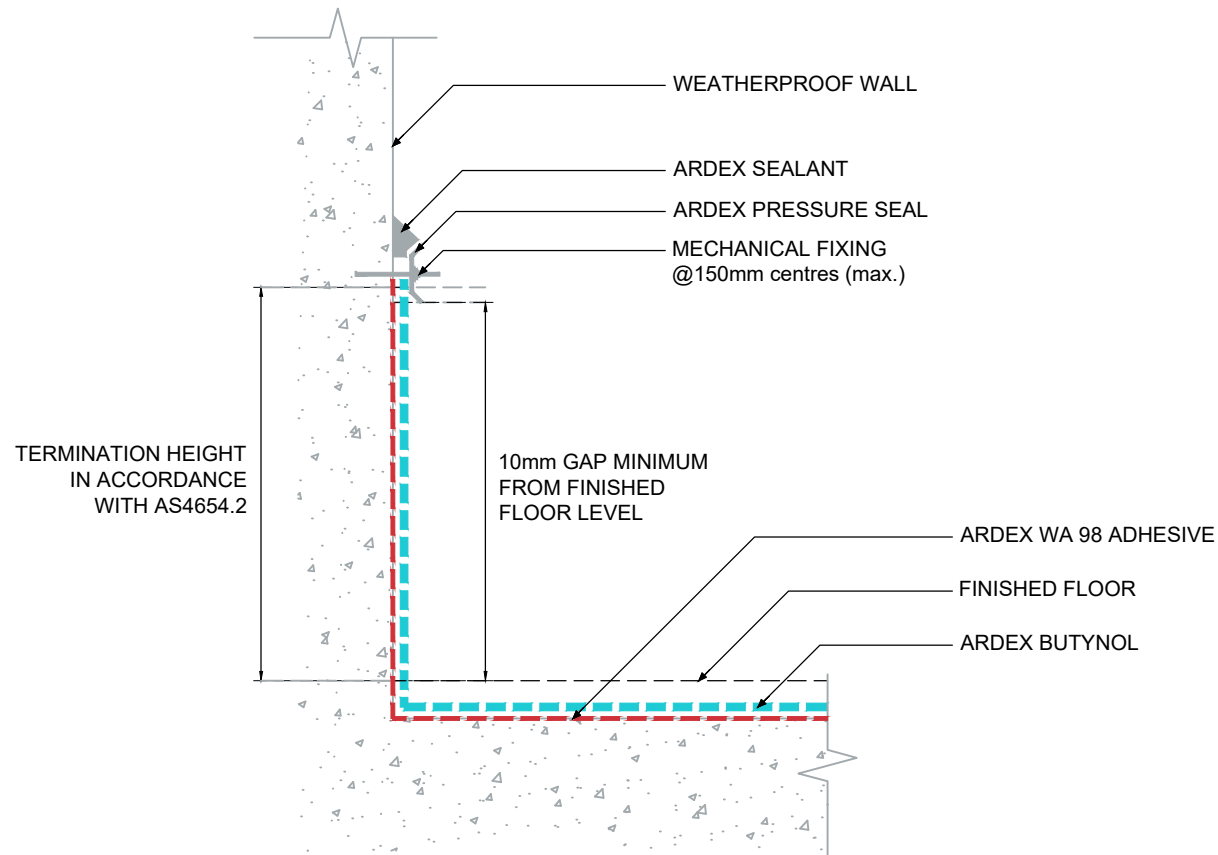
The technical details, recommendations & other information contained in this drawing is given in good faith & represents the best of our knowledge and experience at the time of design. It is your responsibility to ensure that our products are used used correctly in accordance with any applicable Australian Standard, our instructions & recommendations are only for the uses they are intended. We also reserve the right to update information without prior notice to reflect our ongoing research and development program. Country specific recommendations, depending on local standards, codes of practice, building regulations and industry guidelines may effect specific installation recommendations. The supply of our products and services are also subject to certain terms, warranties & exclusions which are available to you on request

FILE NAME	VERTICAL TERMINATION WITH ARDEX PRESSURE SEAL & ARDEX PROTECTIVE COATING - ARDEX BUTYNOL
DRAWN	15/03/2024 by AD
CHECKED	ADAM MCGLONE
SIZE	A4

SCALE	NTS
DRAWING	D91

**VERTICAL TERMINATION
WITH ARDEX PRESSURE
SEAL - ARDEX BUTYNOL**

NOTES



The technical details, recommendations & other information contained in this drawing is given in good faith & represents the best of our knowledge and experience at the time of design. It is your responsibility to ensure that our products are used used correctly in accordance with any applicable Australian Standard, our instructions & recommendations are only for the uses they are intended. We also reserve the right to update information without prior notice to reflect our ongoing research and development program. Country specific recommendations, depending on local standards, codes of practice, building regulations and industry guidelines may effect specific installation recommendations. The supply of our products and services are also subject to certain terms, warranties & exclusions which are available to you on request

FILE NAME VERTICAL TERMINATION WITH ARDEX PRESSURE SEAL - ARDEX BUTYNOL

DRAWN 15/03/2024 by AD

CHECKED ADAM MCGLONE

SIZE A4

ARDEX AUSTRALIA
www.ardexaustralia.com

SCALE NTS

DRAWING D92