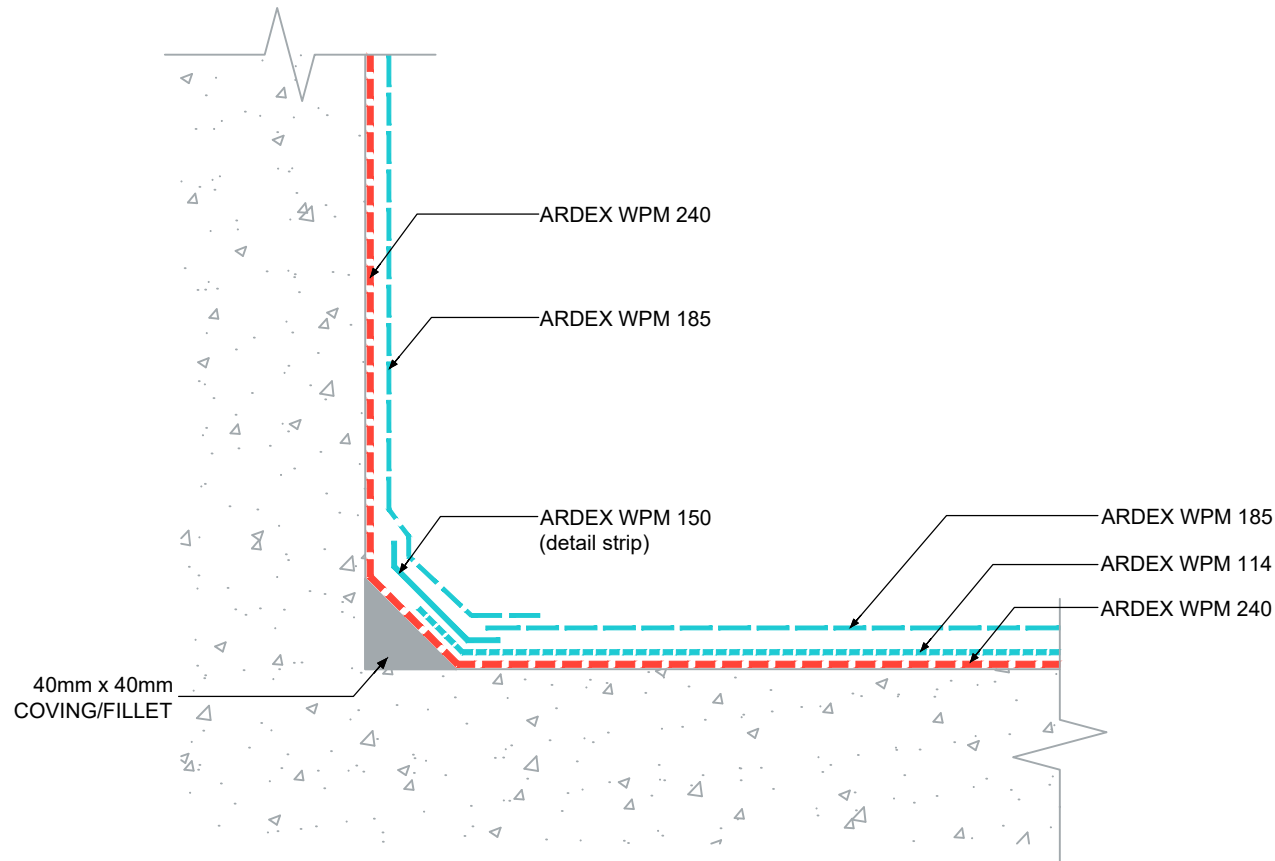


**FLOOR TO WALL JUNCTION
DETAIL - ARDEX WPM 114
VENTED SYSTEM**

NOTES

ARDEX WPM 150 (detail strip)
width size will be dependent on
vertical termination height - to be
advised from project consultant.

Type of membrane termination to
be advised by project consultant.



ARDEX AUSTRALIA
www.ardexaustralia.com

The technical details, recommendations & other information contained in this drawing is given in good faith & represents the best of our knowledge and experience at the time of design. It is your responsibility to ensure that our products are used used correctly in accordance with any applicable Australian Standard, our instructions & recommendations are only for the uses they are intended. We also reserve the right to update information without prior notice to reflect our ongoing research and development program. Country specific recommendations, depending on local standards, codes of practice, building regulations and industry guidelines may effect specific installation recommendations. The supply of our products and services are also subject to certain terms, warranties & exclusions which are available to you on request

FILE NAME	FLOOR TO WALL JUNCTION DETAIL - ARDEX WPM 114 VENTED SYSTEM
DRAWN	27/03/2024 by AD
CHECKED	ADAM MCGLONE
SIZE	A4

SCALE	NTS
DRAWING	D98